 Please read and comply with these original instructions prior to the initial operation of your appliance and store them for later use or subsequent owners.

## Contents

|  |    |   |
|--|----|---|
| Safety instructions . . . . .          | EN | 1 |
| Function . . . . .                     | EN | 1 |
| Proper use . . . . .                   | EN | 1 |
| Environmental protection . . . . .     | EN | 1 |
| Operating elements . . . . .           | EN | 2 |
| Before Commissioning . . . . .         | EN | 2 |
| Operation . . . . .                    | EN | 2 |
| Transport . . . . .                    | EN | 4 |
| Storage . . . . .                      | EN | 4 |
| Maintenance and care . . . . .         | EN | 4 |
| Faults . . . . .                       | EN | 5 |
| Specifications . . . . .               | EN | 6 |
| Accessories . . . . .                  | EN | 7 |
| EC Declaration of Conformity . . . . . | EN | 7 |
| Warranty . . . . .                     | EN | 7 |
| Spare parts . . . . .                  | EN | 7 |

## Safety instructions

Before using the appliance for the first time, read and observe these operating instructions and the accompanying brochure: Safety information for brush cleaning units, 5.956-251.0.

### Hazard levels

#### **DANGER**

*Pointer to immediate danger, which leads to severe injuries or death.*

#### **WARNING**

*Pointer to a possibly dangerous situation, which can lead to severe injuries or death.*

#### **CAUTION**

*Pointer to a possibly dangerous situation, which can lead to minor injuries.*

#### **ATTENTION**

*Pointer to a possibly dangerous situation, which can lead to property damage.*

## Function

The scrubber vacuum is used for wet cleaning or polishing of level floors. Two brush rollers located opposite of each other clean the floor by means of the added detergent liquid. A working width of 400 mm and a capacity of 10 l each of the fresh and dirt water reservoirs allow for effective cleaning.

The power supply operation allows a high capacity without a restriction of the working time.

#### **Note:**

The appliance can be equipped with various accessories depending on the cleaning task.

Ask for our catalog or visit us on the internet at [www.bona.com](http://www.bona.com).

## Proper use

Use this appliance only as directed in these operating instructions.

- This appliance is suited for the commercial use, e.g. in hotels, schools, hospitals, factories, shops, offices, and rental companies.

- The appliance may only be used for the cleaning of hard surfaces that are not sensitive to moisture and polishing operations.

The application temperature ranges from +5°C to +40°C.

- The appliance is not suited for the cleaning of frozen grounds (e.g. in cold stores).

- This appliance is intended for indoor use only.

- The machine should not be used to suck in inflammable gases, undiluted acids or solvents.

This includes petrol, thinning agents or hot oil that can form an explosive mixture when it comes in contact with sucked air. Do not use acetone, undiluted acids and solvents as they are aggressive towards the materials from which the appliance is made.

- The appliance may only be equipped with original accessories and spare parts.

- The appliance is not intended for the cleaning of public traffic routes.

## Environmental protection

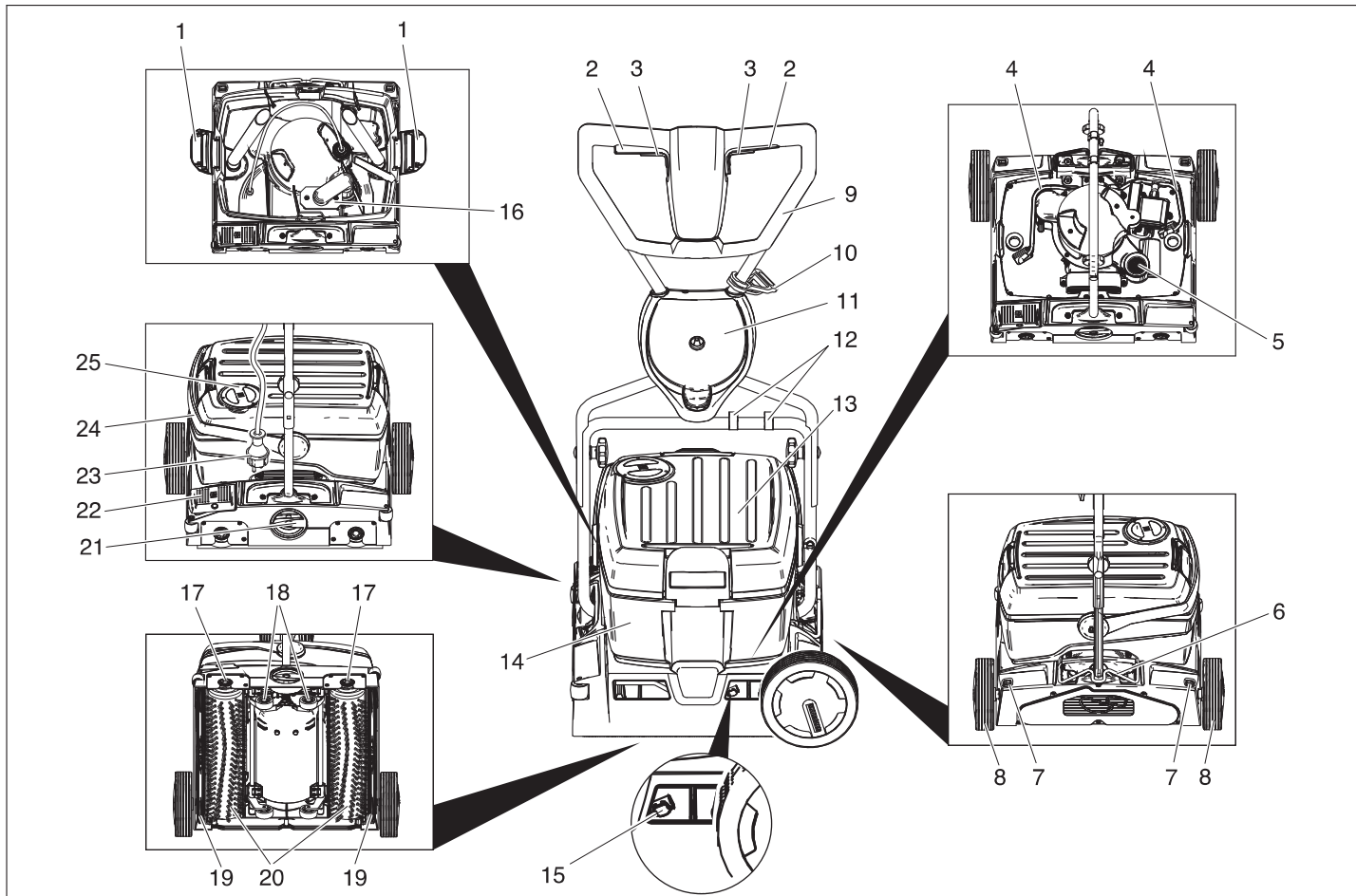


The packaging materials are recyclable. Please do not throw packaging in the domestic waste but pass it on for recycling.



Old units contain valuable recyclable materials. Batteries, oil and similar substances may not be released into the environment. Therefore please dispose of old units through suitable collection systems.

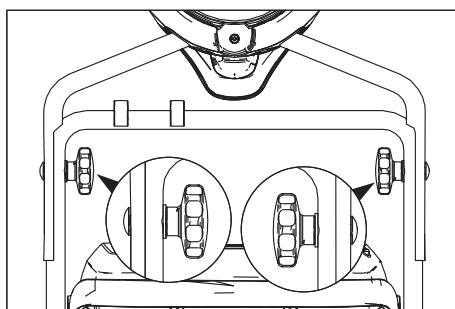
## Operating elements



- 1 Lock for fresh water reservoir
- 2 Switch for brush drive
- 3 Switch for detergent solution
- 4 Hose for detergent solution
- 5 Lint sieve (suction)
- 6 Lock of pushing handle
- 7 Release button for the transport wheel
- 8 Transport wheel
- 9 Push handle
- 10 Strain relief clamp
- 11 Support of the transport wheel
- 12 Clip
- 13 Fresh water tank
- 14 waste water tank
- 15 Push-button for vacuum bar change
- 16 Float
- 17 Button for brush change
- 18 Chassis
- 19 Vacuum bar
- 20 Brushing rollers
- 21 Rotating handle for brush contact pressure
- 22 Pedal to lower vacuum bar
- 23 Mains plug
- 24 Carrying handle for waste water tank
- 25 Fresh water tank cover

### Before Commissioning

#### Installing the pushing handle



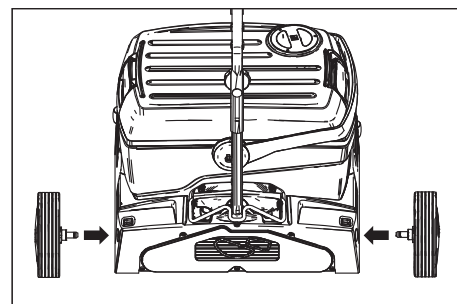
→ Slide the upper slider half onto the lower slider half.

#### ATTENTION

*Risk of damage. Do not open cable loops during assembly.*

- Align the borings (2 possible height adjustments).
- Connect the slider halves to the lock screws, discs and star grips.
- Fasten the cable to the slider using clips.

#### Installing the transport wheels



→ Insert the transport wheel axles into the borings on the appliance and lock them.

#### Installing the Brushes

The brushes must be installed before the initial operation (see "Maintenance works").

### Operation

#### Note:

To put the brush drive out of operation immediately release the brush drive switch.

## Filling in detergents

### ⚠ **WARNING**

*Risk of damage. Only use the recommended detergents. With other detergents, the operator bears the increased risk regarding the operational safety, risk of accident and reduced service life of the appliance. Only use detergents that are free of solvents, hydrochloric acid and hydrofluoric acid.*

*Follow the safety instructions for using detergents.*

### **Note:**

Do not use highly foaming detergents.

Recommended detergents:

| Application                       | Detergent                |
|-----------------------------------|--------------------------|
| Routine cleaning of wooden floors | Bona Cleaner             |
| Deep cleaning of wooden floors    | Bona Deep Clean Solution |

→ Open the cover of the fresh water reservoir.

→ Pour in water/detergent mixture. Maximum temperature of the liquid 50°C

### **Note:**

The fresh water reservoir cover can be used to meter the detergent. When it is used as a container, the cover contains 1% of the fresh water tank up to the marking.

→ Close the cover of the fresh water reservoir.

## Driving to the Place of Use

### Short distances on even surfaces

→ Place the slider vertically.

→ Position the rotary handle for the brush contact pressure in the drive position.

→ Use the pushing handle to push the appliance to the place of use.

### Longer distances on uneven surfaces

→ Place the slider vertically and tilt the lock up.

→ Install the transport wheels.

### **ATTENTION**

*Danger of damage due to leaking water.*

*Remove the waste water and fresh water reservoirs before tilting the appliance.*

→ Remove the filled waste and fresh water reservoirs from the appliance and transport them separately.

→ Tilt the appliance to the side and drive it to the place of use on its transport wheels.

If the transport wheels hinder the use of the appliance:

→ Press the transport wheel release button and pull the transport wheel out.

→ Insert the transport wheels into their holder until they stop.

## Adjust the brush contact pressure

→ Place the slider vertically.

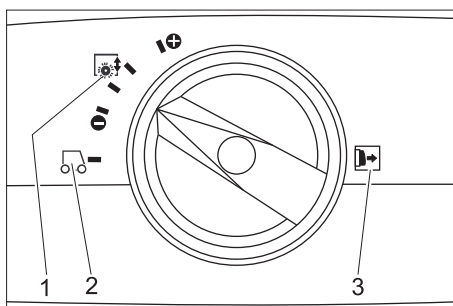
→ Pull out the rotary handle of the brush contact pressure and set it to the desired value.

### **Note:**

Carry out the initial cleaning attempts with less contact pressure. Increase contact pressure step-by-step until the desired cleaning result is achieved. The correct setting of the contact pressure reduces the wear and tear on the brushes.

The brush drive is switched off when there is overload.

When cleaning with microfibre rollers, the contact pressure must not be adjusted higher than the position mentioned below. With a higher contact pressure, there is a danger of destroying the microfibre rollers.



1 Brush contact pressure

2 **Driving**

3 **Note:** Pull out the rotary handle for the brush contact pressure prior to this adjustment.

## Establish mains contact

### ⚠ **DANGER**

*Risk of electric shock.*

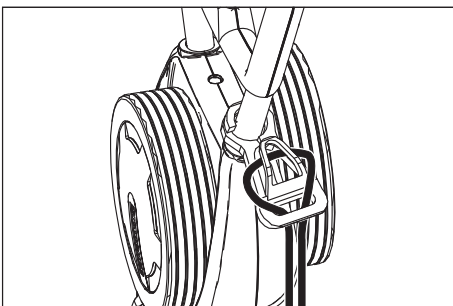
*Check the mains cables of the machine each time before using the machine to see that it is not damaged. Never operate a machine with damaged cables. Get the damaged cables replaced by an electrician.*

### **ATTENTION**

*Risk of damage!*

*The highest allowed net impedance at the electrical connection point (refer to technical data) is not to be exceeded. In case of confusion regarding the power impedance present on your connection, please contact your utilities provider.*

*Use the extension cord that has an adequate cross-section (see "Technical Data") and unwind it fully from the cable drum.*



→ Insert the looped end of the extension cable in the strain relief hook.

→ Plug in the mains plug.

## Cleaning

### ⚠ **DANGER**

*Risk of injury on account of electric shock caused by a damaged mains connection.*

*Do not let the mains connection come into contact with the rotating brushes.*

### **ATTENTION**

*Risk of damage. When cleaning close to a wall, position the appliance so that the deflection rollers point towards the wall.*

→ If the detergent solution is to be vacuumed off after the cleaning process:

Check that all vacuum bars are inserted into the appliance

Press the pedal to lower the vacuum bar.

→ Place the slider vertically.

→ Turn on the brush irrigation by using the switch for the detergent solution.

→ Turn on the brushes by using the switch for the brush drive.

→ Swivel the slider toward the operator - the chassis is retracted and the brushes touch the floor.

→ Move the appliance over the surface to be processed by the slider.

### **ATTENTION**

*Risk of damage to the floor covering. Do not operate the appliance on the spot.*

## Polishing

→ Remove both vacuum bars from the appliance (see chapter "Maintenance tasks/replacing vacuum bar").

→ Place the slider vertically.

→ Turn on the brushes by using the switch for the brush drive.

→ Swivel the slider toward the operator - the chassis is retracted and the brushes touch the floor.

→ Move the appliance over the surface to be processed by the slider.

### **ATTENTION**

*Risk of damage to the floor covering. Do not operate the appliance on the spot.*

### **Note:**

To polish underneath furniture, the fresh water tank and the waste water tank can be removed.

## Shutting Down the Appliance

→ Release the switch for detergent solution.

→ Push the appliance forward for another 1-2 m to draw off residual water.

→ Release the brush drive button.

→ Press the pedal to lower the vacuum bar.

→ Place the slider vertically - the brushes are elevated.

→ Disconnect the mains plug.

### **ATTENTION**

*Risk of deformation of the brushes. When shutting down the appliance relieve the brushes by putting the push handle in an upright position.*

## Emptying the Fresh Water Reservoir

- Open the locks for the fresh water reservoir.
- Tilt the carrying handle for the waste water tank towards the side.
- Lift up the fresh water reservoir and carry it to the disposal site.

### ⚠ **WARNING**

Please observe the local provisions regarding the wastewater treatment.

- Remove the cover of the fresh water reservoir and pour out the liquid via the notch.

## Emptying the waste Water tank

### Note:

If the waste water tank is full, the float closes the suction channel. The suction operation is interrupted. Empty the waste water tank.

- Remove the fresh water reservoir, as described above.
- Lift up the waste water tank and carry it to the disposal site.

### ⚠ **WARNING**

Please observe the local provisions regarding the wastewater treatment.

- Pour out dirty water.
- Rinse the waste water tank with clear water.

## Transport

### ⚠ **CAUTION**

Risk of personal injury or damage! Mind the weight of the appliance during transport.

- When transporting in vehicles, secure the appliance according to the guidelines from slipping and tipping over.

To reduce the required space, the pushing handle can be folded or disassembled:

- Release the star grips of the pushing handle fastening.
- Unscrew the star grips, remove the screws and take off the upper push handle half.

## Storage

### ⚠ **CAUTION**

Risk of personal injury or damage! Consider the weight of the appliance when storing it.

This appliance must only be stored in interior rooms.

## Maintenance and care

### ⚠ **DANGER**

Risk of electric shock!

Risk of injury!

Pull the plug from the mains before carrying out any tasks on the appliance.

### **ATTENTION**

Risk of damage to the device on account of water leakage. Drain out dirt water and the remaining free water before working at the machine.

## Maintenance schedule

### After the work

#### **ATTENTION**

Risk of damage. Do not wash down the appliance with water and do not use aggressive detergents.

- Pour out dirty water.
- Rinse the waste water tank with clear water.
- Empty the fresh water reservoir.
- Fill the fresh water tank with clear water and rinse the appliance to avoid residue buildup.
- Remove the remaining water from the fresh water tank.
- Check the seal in the ball valve in the fresh water reservoir.
- Check the fluff filter, clean if required.
- Let the reservoirs dry prior to closing them to prevent odor creation.
- Clean the outside of the appliance with a damp cloth which has been soaked in mild detergent.
- Clean the vacuum lips, check for wear and replace the vacuum bar if required.
- Check the brushes for wear, replace if required.
- Clean the water distribution bars above the brushes, remove if necessary and flush with water.

### Monthly

- Check the condition of the seals between the appliance and the waste water tank; replace if required.
- Clean the brush tunnel.

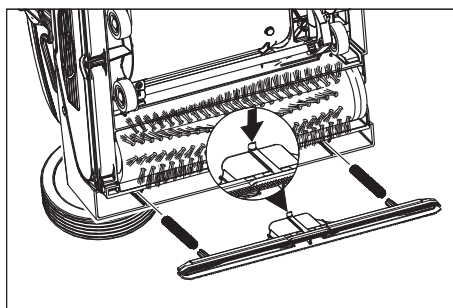
### Yearly

- Assign yearly inspection and service to the local customer service.

## Maintenance Works

### Replacing the vacuum bar

- Lift the vacuum bar by activating the pedal for the vacuum bar lowering.
- Press the push-button for the vacuum bar change toward the inside - the vacuum bar will release.
- Pull off the vacuum bar downwards.
- Remove the screw springs and install the new vacuum bar.



- Align the new vacuum bar so that the locking nose points toward the centre of the appliance.
- Insert the screw springs into the pick-ups on the appliance.
- Insert the vacuum bar into the appliance and lock it in.
- Repeat process on the second bar.

**Note:**

Regular replacement of the two suction bars improves the scraping effect and improves the working time.

### Replacing the brush rollers

- Lay the device on its side.
- Press the brush change button and simultaneously tilt the brush roller downwards.
- Pull out the brush roller.
- Place the new brush roller on the driver and lock into place.

## Frost protection

In case of danger of frost:

- Empty the fresh and waste water tank.
- Push the button for detergent solution until no more water is expelled.
- Store the appliance in a frost-protected room.

## Faults

### ⚠ **DANGER**

*Risk of electric shock!*

*Risk of injury!*

*Pull the plug from the mains before carrying out any tasks on the appliance.*

### **ATTENTION**

*Risk of damage to the device on account of water leakage. Drain out dirt water and the remaining free water before working at the machine.*

In case of faults that cannot be remedied using the table below please contact the customer service.

| Fault   | Remedy  |
|---|---|
| Appliance cannot be started                                 | Check if the mains plug is connected.   |
|   | Socket fuse rating too low, look for proper socket.   |
| Insufficient water quantity                                 | Check fresh water level, refill tank if necessary.  |
|   | Clean the ball valve in the fresh water reservoir.  |
|   | Check and ensure that the fresh water reservoir is seated properly on the appliance.  |
|   | Filter in the fresh water reservoir is plugged, clean filter.   |
|   | Pull out the water distribution bars above the brushes and flush with water.  |
|   | Check hoses for blockages; clean if required.   |
| Insufficient vacuum performance                             | Empty the wastewater reservoir.   |
|   | Check and ensure that the fresh water tank is seated properly on the waste water tank.  |
|   | Check seals on the fresh water reservoir, clean if necessary.   |
|   | Clean the seals between the appliance and the waste water tanks and check for tightness, replace if required.                                 |
|   | Clean the fluff filter.   |
|   | Clean the vacuum lips on the vacuum bar, replace if required  |
|   | Suction channel plugged, clean.   |
| Check if the vacuum bar is plugged, remove plug if required |   |
| Insufficient cleaning result                                | Increase brush contact pressure.  |
|   | Check the brushes for wear, replace if required.  |
|   | Use brush rollers suited for the type of dirt and floor covering.   |
| Brushes do not turn   | Check if foreign matters block the brushes; remove foreign matter if required.  |
|   | Reduce contact pressure.  |
|   | Overcurrent protective switch was triggered. The overcurrent protective switch will allow the operation after max. one minute.                |
| Appliance vibrates.   | Brush rollers are deformed because they were not unloaded by tilting the slider vertically when parking the appliance; replace brush rollers. |

## Specifications

| <b>Power</b>                                  |                   |                  |
|---|-------------------|------------------|
| Nominal voltage                               | V/Hz              | 220...240 / 1~50 |
| Average power consumption                     | W                 | 1900             |
| Suction engine output                         | W                 | 500              |
| Brush engine output                           | W                 | 2100             |
| Max. power intake                             | W                 | 2300             |
| Maximum allowed net impedance                 | Ohm               | 0.255+j0.159     |
| Extension cable 10 m                          | mm <sup>2</sup>   | 1,5              |
| Extension cord 30 m                           | mm <sup>2</sup>   | 2,5              |
| <b>Vacuuming</b>                              |                   |                  |
| Cleaning power, air quantity                  | l/s               | 20               |
| Cleaning power, negative pressure             | kPa               | 10               |
| <b>Cleaning brushes</b>                       |                   |                  |
| Working width                                 | mm                | 400              |
| Brush diameter                                | mm                | 96               |
| Brush speed                                   | 1/min             | 1100             |
| <b>Dimensions and weights</b>                 |                   |                  |
| Theoretical surface cleaning performance      | m <sup>2</sup> /h | 400              |
| Fresh/waste water tank volume                 | l                 | 10               |
| Length (without pushing handle)               | mm                | 520              |
| Width (without vacuum bar)                    | mm                | 470              |
| Height (without pushing handle)               | mm                | 380              |
| Weight (without tank contents)                | kg                | 34,5             |
| <b>Values determined as per EN 60335-2-67</b> |                   |                  |
| Hand-arm vibration value                      | m/s <sup>2</sup>  | <2,5             |
| Uncertainty K                                 | m/s <sup>2</sup>  | 0,2              |
| Sound pressure level L <sub>pA</sub>          | dB(A)             | 74               |
| Uncertainty K <sub>pA</sub>                   | dB(A)             | 1                |
| Sound power level L <sub>WA</sub>             | dB(A)             | 87               |
| Uncertainty K <sub>WA</sub>                   | dB(A)             | 1                |

## Accessories

|                            |                       | Order No.        | Piece | Machine requires piece |
|----------------------------|-----------------------|------------------|-------|------------------------|
| Brush roller, white (soft) | For polishing floors. | AS36476<br>22500 | 1     | 2                      |
| Vacuum bar, standard       |                       | AS36477<br>73230 | 1     | 2                      |

## EC Declaration of Conformity

We hereby declare that the machine described below complies with the relevant basic safety and health requirements of the EU Directives, both in its basic design and construction as well as in the version put into circulation by us. This declaration shall cease to be valid if the machine is modified without our prior approval.

**Product:** Floor cleaner

**Type:** 1.783-xxx

**Relevant EU Directives**

2006/42/EC (+2009/127/EC)

2014/30/EU

**Applied harmonized standards**

EN 55014-1: 2006+A1: 2009+A2: 2011

EN 55014-2: 2015

EN 60335-1

EN 60335-2-72

EN 61000-3-2: 2006+A1: 2009+A2: 2009

EN 61000-3-3: 2013

EN 62233: 2008

**Applied national standards**

-

The undersigned act on behalf and under the power of attorney of the company management



Anders Schön  
Site Manager, Bona Machines

Documentation supervisor:  
Anders Schön

Bona AB  
Vallgatan 45  
SE-716 31 Fjugesta, Sweden

Tel: +46 40 38 55 00

Fax: +46 585 204 84

Fjugesta 2012-05-12

## Warranty

The warranty terms published by our competent sales company are applicable in each country. We will repair potential failures of your accessory within the warranty period free of charge, provided that such failure is caused by faulty material or defects in fabrication. In the event of a warranty claim please contact your dealer or the nearest authorized Bona Customer Service center. Please submit the proof of purchase.

## Spare parts

- Only accessories and spare parts authorised by Bona AB may be used. Original accessories and spare parts ensure the safe and trouble-free operation of the unit.
- At the end of the operating instructions you will find a selected list of spare parts that are often required.
- For additional information about spare parts, please go to [www.bona.com/spareparts](http://www.bona.com/spareparts).